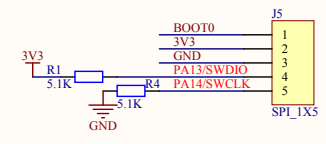


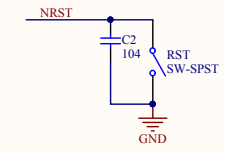
系统供电稳压

STM32工作模式：短接Boot0和3V3后
 芯片上电复位可以进入到ISP下载模式
 可以通过串口1--TTL接口下载程序

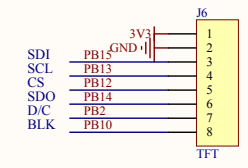


SWD调试编程接口

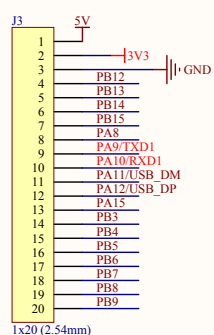
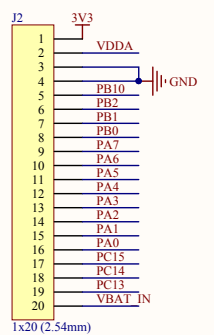
STM32F4x1核心板



系统复位

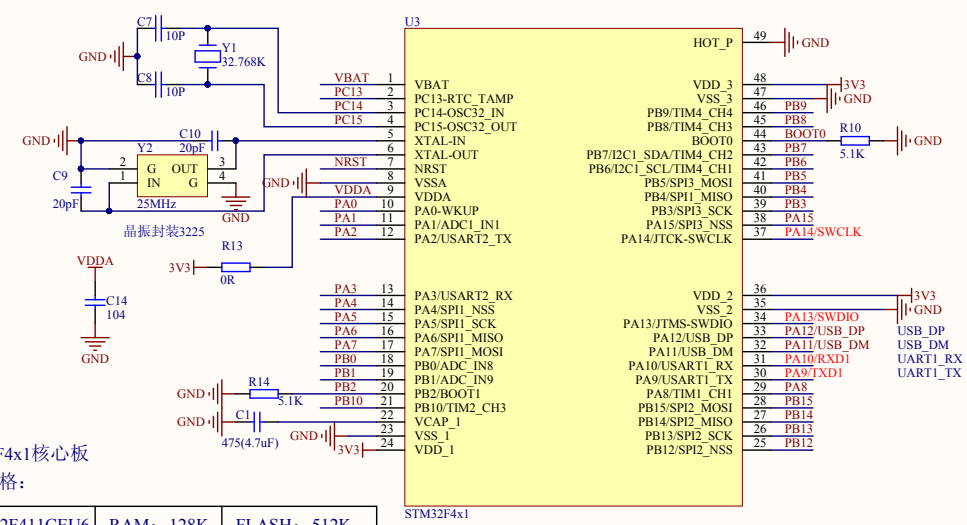


OLED/TFT液晶接口



通用I/O接口

CPU系统

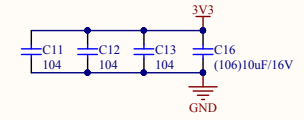


STM32F4x1核心板
 通用规格：

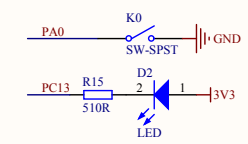
STM32F411CEU6	RAM: 128K	FLASH: 512K
STM32F401CEU6	RAM: 96K	FLASH: 512K
STM32F401CCU6	RAM: 64K	FLASH: 256K

具体详细功能请以数据手册为准

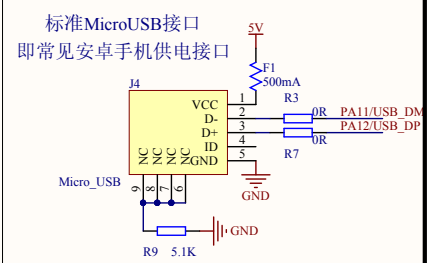
可以接本店：0.96寸、1.3寸OLED液晶屏
 1.44寸、1.8寸TFT液晶屏
 1.3寸、2.0寸TFT 高清液晶屏
 2.4寸、2.8寸TFT液晶屏



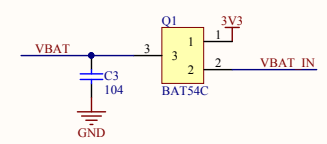
外部存储FLASH



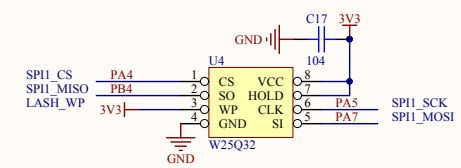
按键和LED灯



供电及STM32-USB Slave



实时时钟备用电池



固定孔直径: 2mm

