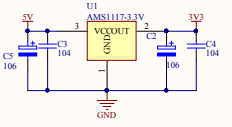
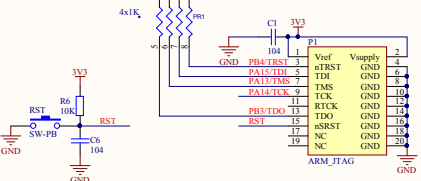


预留5V输入接口，连接器间距2.54mm



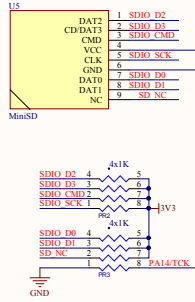
供电稳压供电

复位按键

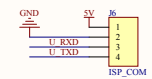


JTAG/SWD调试接口

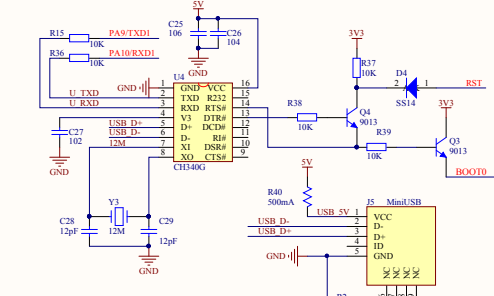
STM32F407VE核心板(加强版)



串口1-TTL

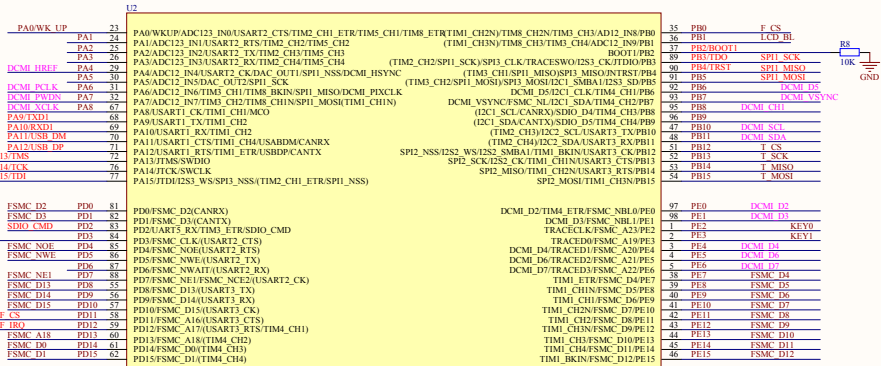


USB接口转串口TTL 一键下载

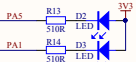


CPU简介

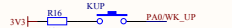
STM32F407VET6
RAM: 196K FLASH: 512K
内核: ARM 32位M4 CPU
最高168MHz工作频率



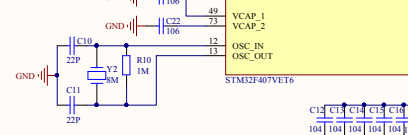
供电指示灯



LED指示灯

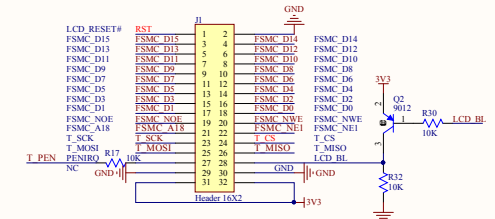


用户按键



实时时钟备用电池

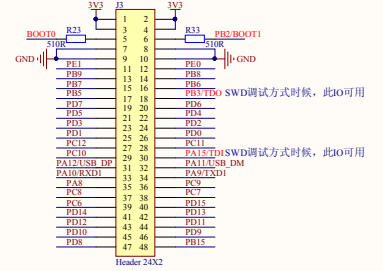
TFT液晶屏接口



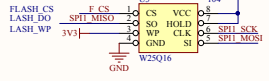
BOOT0	BOOT1	启动方式
0	未关	用户闪存
1	0	ISP下载模式
1	1	内部RAM

STM32工作模式已经默认接地; 通过7和8接地正常工作, 跳线帽不用插, 如果需要其他工作模式可以改换跳线帽插方式, 板子默认都带跳线帽 跳线帽为了方便板子携带, 默认插到闪存模式

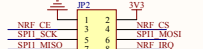
STM32工作模式选择



预留IO接口

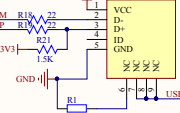


外部存储FLASH

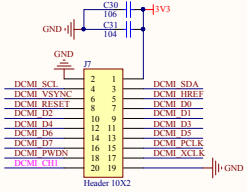


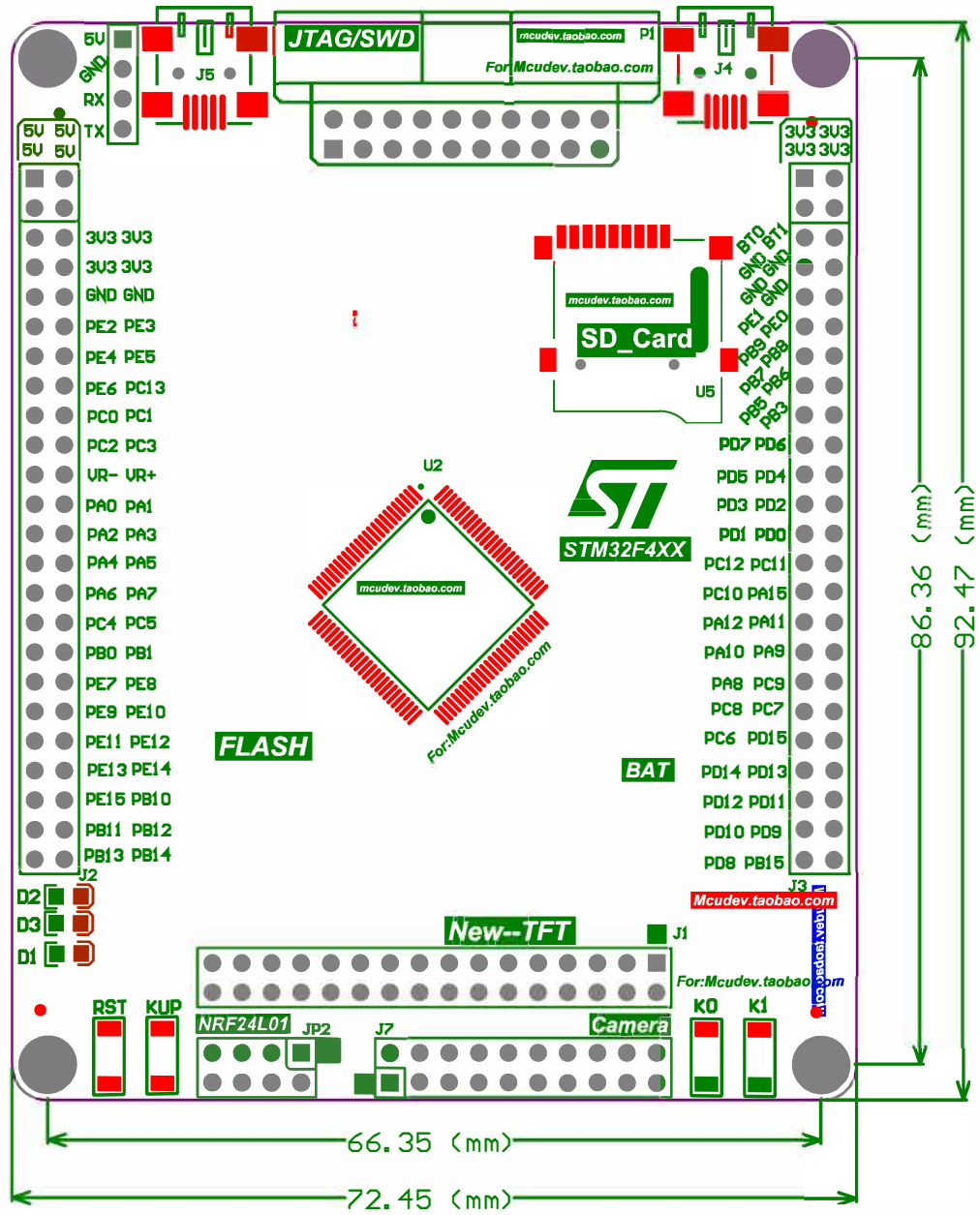
NRF2401无线模块接口

STM32-USB Slave接口



摄像头接口-支持OV2640和OV5640





Bill of Materials

<Parameter Title not found>

Source Data From: STM32_F4VE_Pro.PrfPcb
 Project: STM32_F4VE_Pro.PrfPcb
 Variant: None

Creation Date: 2017-12-28 20:26:24
 Print Date: 43097 43097.85172

Footprint	Comment	LibRef	Designator	Description	Quantity
BAT	BAT	BATTERY	B1		1
RC0603	104	Cap, CAP, CAP	C1, C3, C4, C6, C7, C12, C13, C14, C15	Capacitor, Capacitor, Capacitor, Capacitor	16
		CAP, Cap, Cap,	C16, C17, C19, C20, C23, C26, C31	Capacitor, Capacitor, Capacitor, Capacitor	
		Cap, Cap, Cap,		Capacitor, Capacitor, Capacitor, Capacitor	
		Cap, Cap, Cap		(Semiconductor SIM Model), [NoValue],	
		Semi, CAP, Cap		Capacitor, Capacitor, Capacitor	
		Cap, Cap			
RC0805	106	ELECTRO2,	C2, C5, C18, C21, C22, C24, C25, C30	[NoValue], [NoValue], Capacitor, Capacitor	8
		ELECTRO2,		Capacitor, Capacitor, Capacitor, Capacitor	
		Cap, Cap, Cap,			
		Cap, Cap, Cap			
RC0603	12P	CAP	C8, C9		2
RC0603	22P	CAP	C10, C11	Capacitor	2
RC0603	102	Cap	C27	Capacitor	1
RC0603	12pF	Cap	C28, C29	Capacitor	2
LED0805	LED	LED	D1, D2, D3		3
SOD_323	SS14	Diode	D4	Default Diode	1
IDE2X16	Header 16X2	Header 16X2	J1	Header, 16-Pin, Dual row	1
IDE2X24	Header 24X2	Header 24X2	J2, J3	Header, 24-Pin, Dual row	2
Mini_USB	MiniUSB	MiniUSB	J4, J5		2
HDR1X4	ISP_COM	Header 4	J6	Header, 4-Pin	1
IDE2x10	Header 10X2	Header 10X2	J7	Header, 10-Pin, Dual row	1
IDE2X4	NRF2401	Header 4X2	JP2	Header, 4-Pin, Dual row	1
SW-SPST	SW-PB	SW-PB	K0, K1, KUP, RST		4
JTAG-20P	ARM_JTAG	JTAG	P1	JTAG	1
PR4	4x1K	RR-4x100k-120	PR1, PR2, PR3		3
SOT-23-	BAT54C	BAT54C	Q1		1
BAT54C					
PNP_SOT23	9012	PNP	Q2	PNP Bipolar Transistor	1
TO-226-AA	9013	NPN	Q3, Q4	NPN Bipolar Transistor	2
RC0603	1M	Res2	R1, R2, R10	Resistor	3
RC0603	510R	Res2	R5, R13, R14, R23, R33	Resistor	5
RC0603	10K	Res2, Res2,	R6, R7, R8, R15, R16, R17, R30, R32, R	Resistor, Resistor, Resistor, Resistor,	12
		Res2, Res2,	R37, R38, R39	Resistor, [NoValue], [NoValue], [NoValue]	
		Res2, RES,		Resistor, Resistor, Resistor, Resistor	
		RES, RES,			
		Res2, Res2,			
		Res2, Res2			
RC0603	0R	Res2	R11, R34, R35	Resistor	3
RC0603	22	RES	R18, R19		2
RC0603	1.5K	RES	R21		1
RC0805	500mA	RES	R40		1
SOT-223	AMS1117-3.3V	11	U1		1
	STM32F407VE	STM32F407VE	U2		1
	6				
SOP8L	W25Q16	W25X16	U3		1
SOP16M	CH340G	CH340G	U4	USB2UART	1
TF_SD	MiniSD	MiniSD	U5		1
JZ32768	32.768K	CRYSTAL	Y1	晶振	1
JZ49S	8M	CRYSTAL	Y2	Crystal	1
JZ49_Com	12M	CRYSTAL	Y3	Crystal	1

Approved	Notes