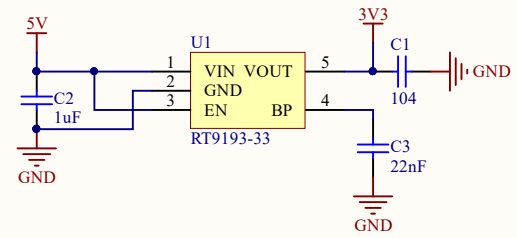
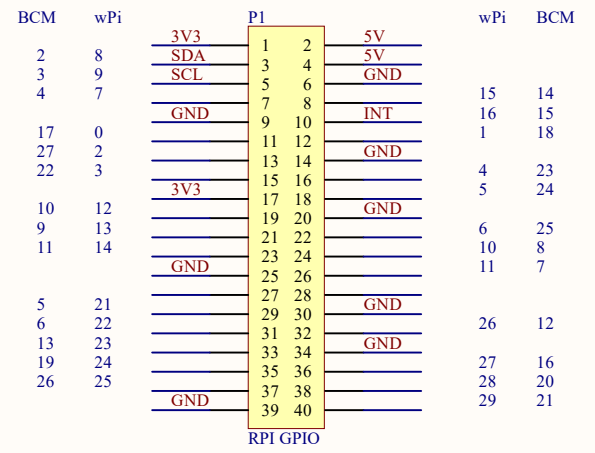


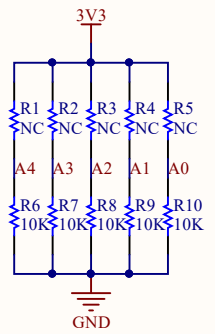
Interface



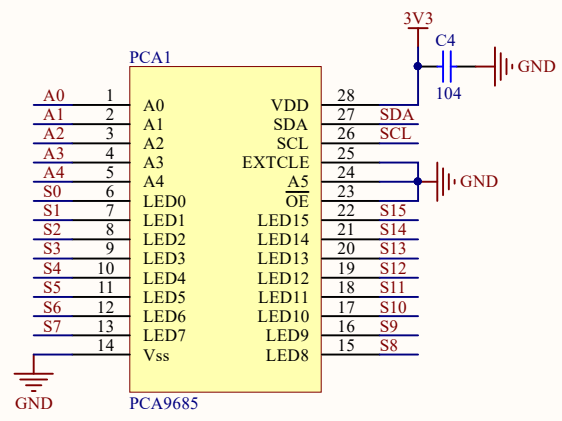
Power



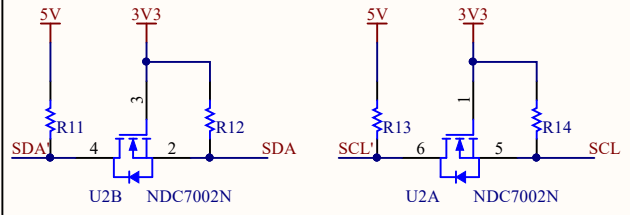
RPI GPIO



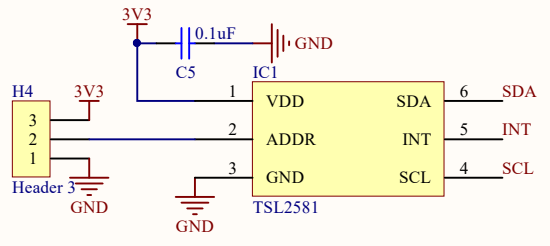
I2C to PWM



Pan-Tilt HAT



Logic Level Converter



Light Sensor



# Pan-Tilt HAT

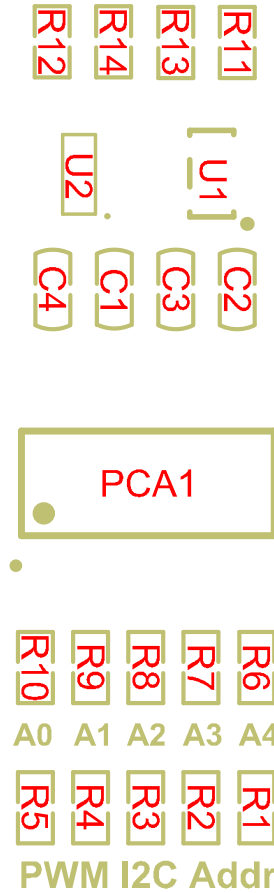
PCA9685 16-Channel 12-Bit PWM Driver  
TSL2581 light Sensor

GND  
5V  
S1  
GND  
5V  
S0

H2  
H3



0 **H4** 1  
light I2C Addr



5V  
GND  
SDA H1  
SCL  
INT

P1