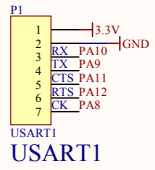
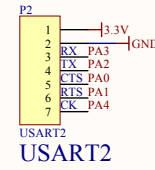


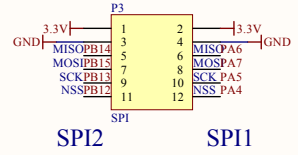
USER LED



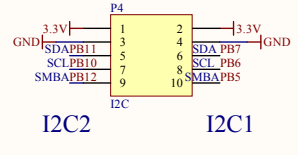
USART1



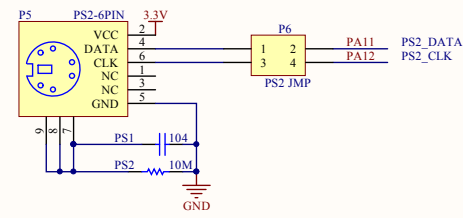
USART2



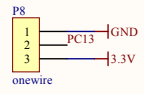
SPI2 SPI1



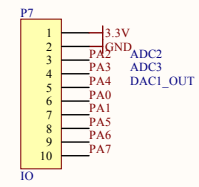
I2C2 I2C1



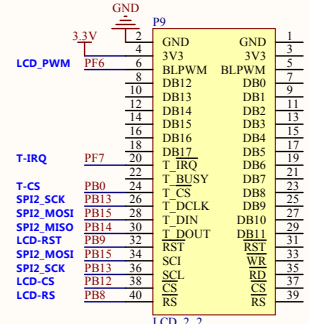
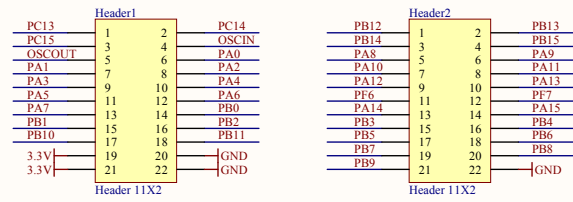
PS2



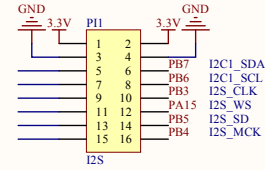
ONEWIRE



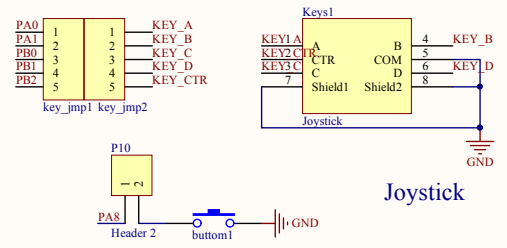
IO



LCD

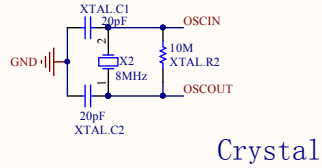
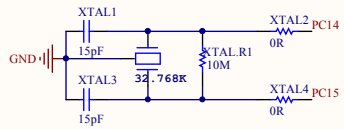
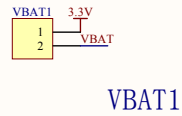
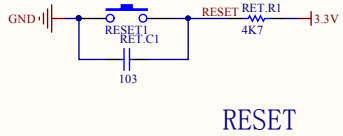
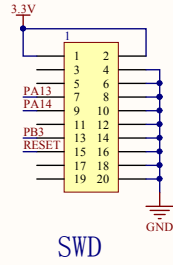
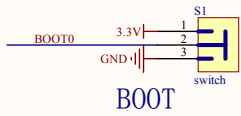


I2S

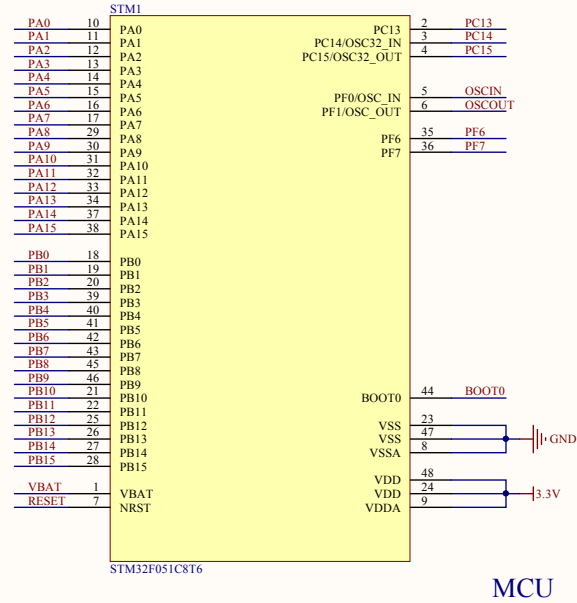


Joystick

Title			Open05xC		
Size	Number			Revision	
A3					
Date:	2013/5/31			Sheet of	
File:	E:\PCB\Interface.SchDoc			Drawn By:	

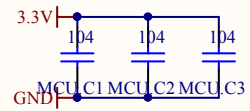
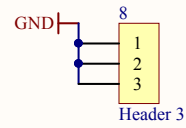
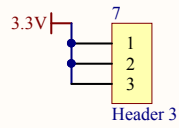
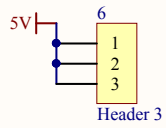
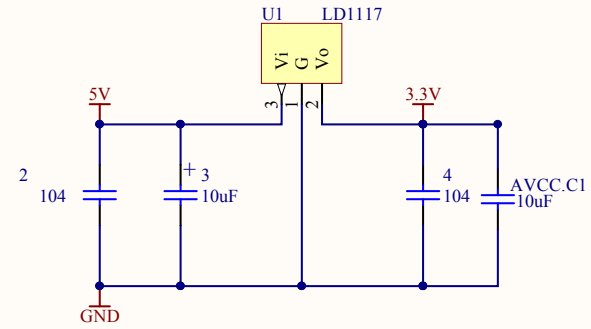
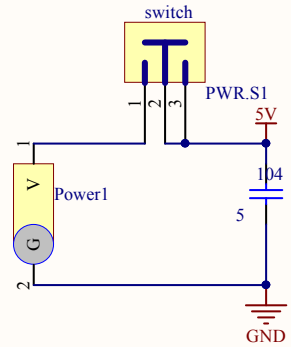


W
aveshare



Title		
Open05xC		
Size	Number	Revision
A3		
Date:	2013/5/31	Sheet of
File:	E:\PCB_1\MCU.SchDoc	Drawn By:

POWER



Title		
Open05xC		
Size	Number	Revision
A		
Date:	2013/5/31	Sheet of
File:	E:\PCB\...\Power.SchDoc	Drawn By: