



**PICkit 3 Programmer**

File Device Family Programmer Tools View Help

Device Configuration

Device: Not Present [Configuration:](#)

User IDs: 00 00 00 00

Checksum: 0000 OSCCAL: 0000 BandGap: 0000

The PICkit 3 is in MPLAB mode. Use the Tools menu to download an OS compatible with this application.

**MICROCHIP**

VDD PICkit 3

On  /MCLR

Read Write Verify Erase Blank Check

**Program Memory**

Enabled Hex Only Source: None (Empty/Erased)

00000
00008
00010
00018
00020
00028
00030
00038
00040
00048
00050
00058

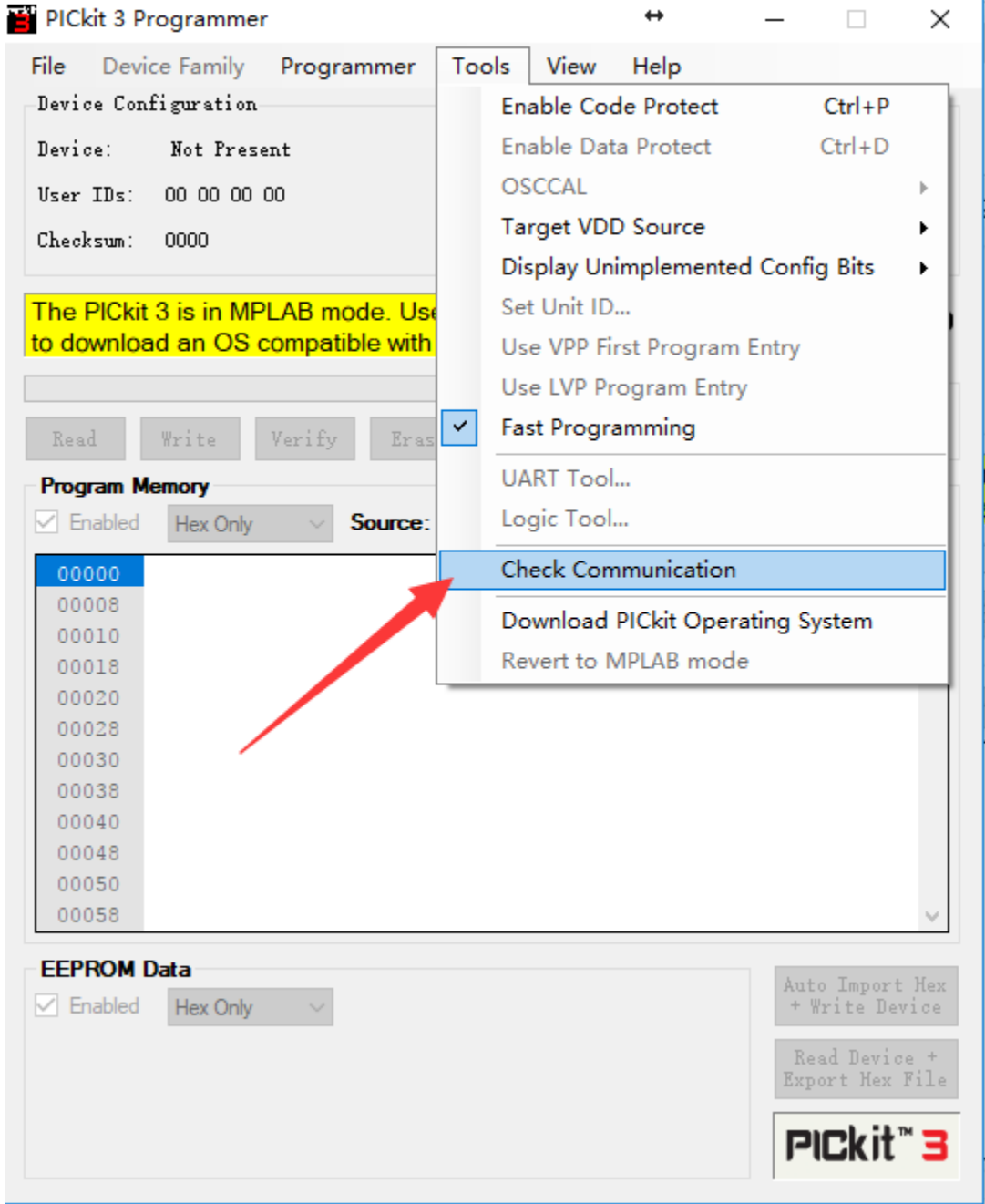
**EEPROM Data**

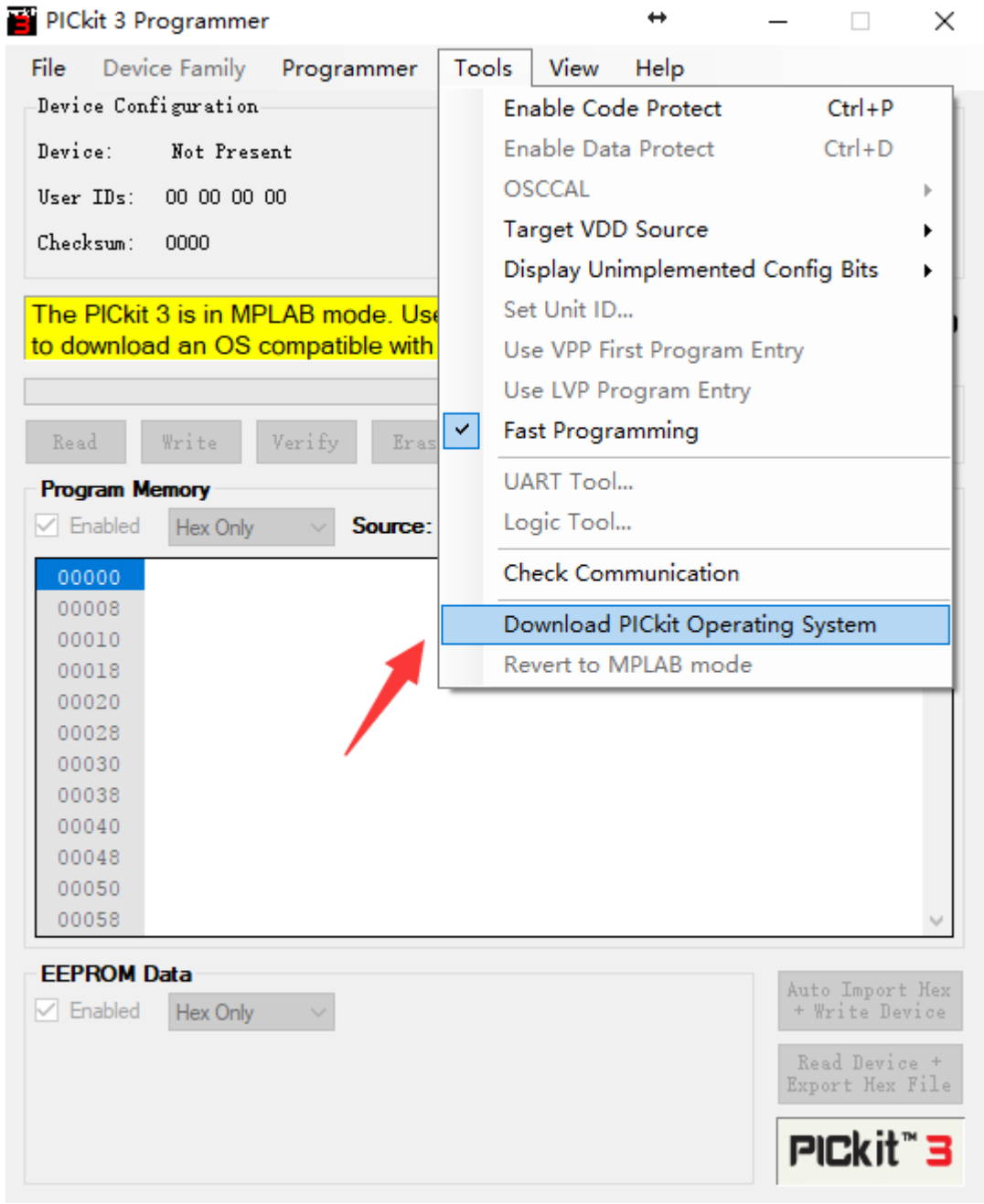
Enabled Hex Only

Auto Import Hex + Write Device

Read Device + Export Hex File

**PICkit™ 3**





PIC18F Configuration

Device:	PIC18F4520	Configuration:	0700	1F1F	8300	0085
User IDs:	FF FF FF FF FF FF FF FF		C00F	E00F	400F	
Checksum:	835A	OSCCAL:		BandGap:		

PICkit 3 connected. ID = BUR151571928  
PIC Device Found.



Read Write Verify Erase Blank Check

VDD Target  
 Check  
 /MCLR  
3.3

Program Memory

Enabled Hex Only Source: None (Empty/Erased)

0000	FFFF	FFFF	FFFF	FFFF	FFFF	FFFF	FFFF	FFFF
0010	FFFF	FFFF	FFFF	FFFF	FFFF	FFFF	FFFF	FFFF
0020	FFFF	FFFF	FFFF	FFFF	FFFF	FFFF	FFFF	FFFF
0030	FFFF	FFFF	FFFF	FFFF	FFFF	FFFF	FFFF	FFFF
0040	FFFF	FFFF	FFFF	FFFF	FFFF	FFFF	FFFF	FFFF
0050	FFFF	FFFF	FFFF	FFFF	FFFF	FFFF	FFFF	FFFF
0060	FFFF	FFFF	FFFF	FFFF	FFFF	FFFF	FFFF	FFFF
0070	FFFF	FFFF	FFFF	FFFF	FFFF	FFFF	FFFF	FFFF
0080	FFFF	FFFF	FFFF	FFFF	FFFF	FFFF	FFFF	FFFF
0090	FFFF	FFFF	FFFF	FFFF	FFFF	FFFF	FFFF	FFFF
00A0	FFFF	FFFF	FFFF	FFFF	FFFF	FFFF	FFFF	FFFF
00B0	FFFF	FFFF	FFFF	FFFF	FFFF	FFFF	FFFF	FFFF

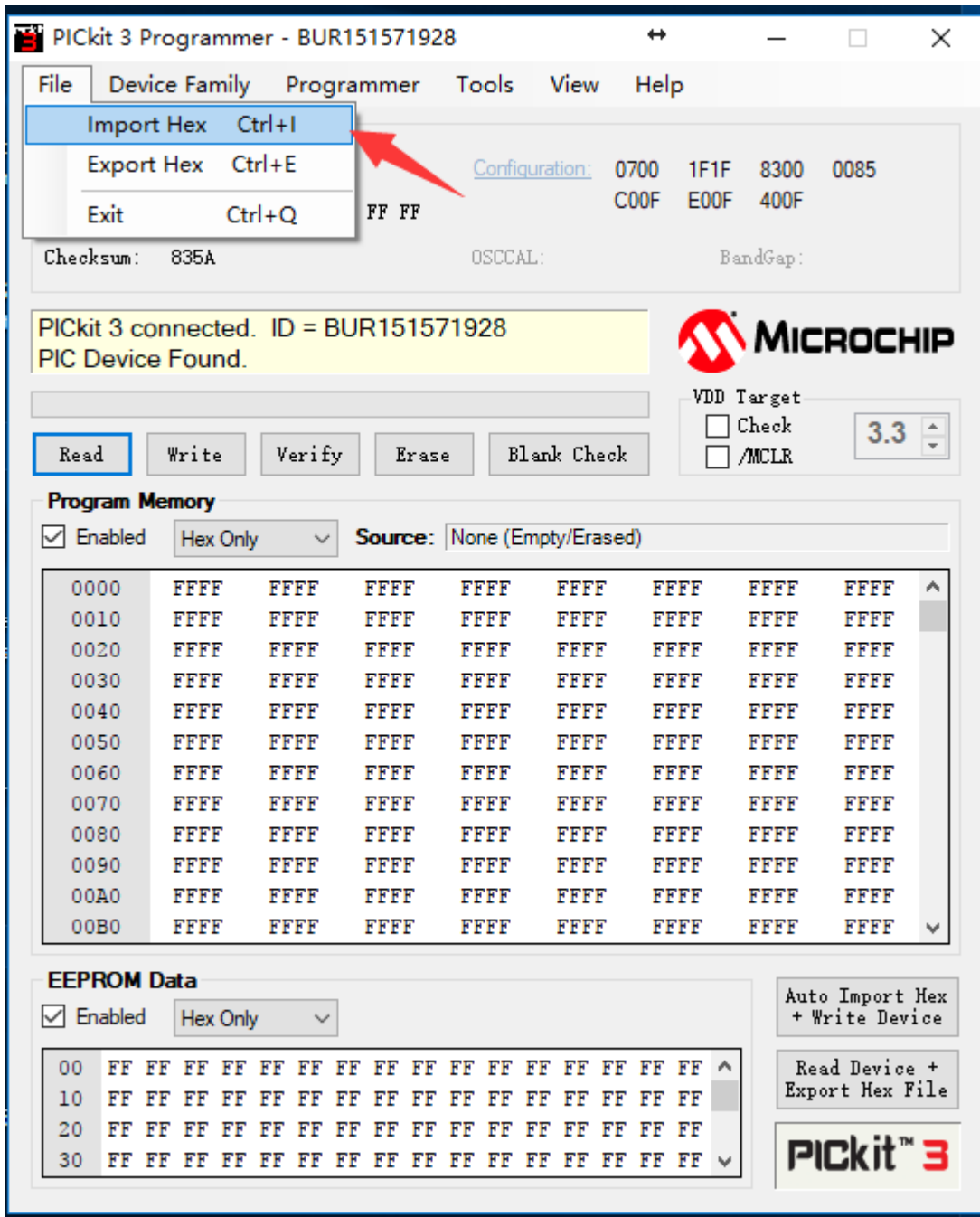
EEPROM Data

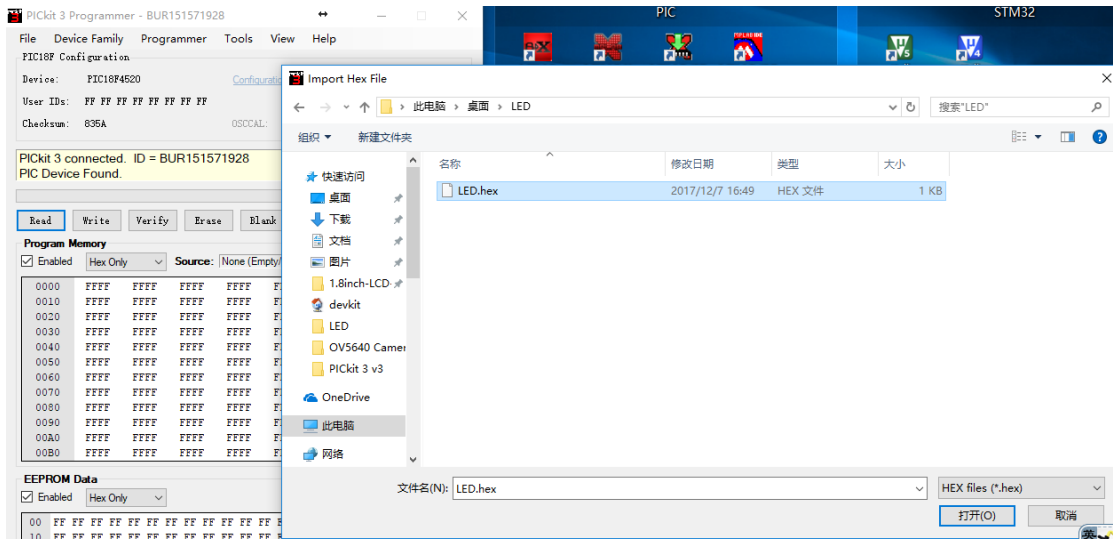
Enabled Hex Only

00	FF	FF	FF	FF	FF	FF	FF	FF	FF	FF	FF	FF	FF	FF
10	FF	FF	FF	FF	FF	FF	FF	FF	FF	FF	FF	FF	FF	FF
20	FF	FF	FF	FF	FF	FF	FF	FF	FF	FF	FF	FF	FF	FF
30	FF	FF	FF	FF	FF	FF	FF	FF	FF	FF	FF	FF	FF	FF

Auto Import Hex + Write Device

Read Device + Export Hex File






PICkit 3 Programmer - BUR151571928

File Device Family Programmer Tools View Help

PIC18F Configuration

Device: PIC18F4520 Configuration: 0200 1E1F 8300 0080  
User IDs: FF FF FF FF FF FF FF FF CO0F E00F 400F  
Checksum: 1122 OSCCAL: BandGap:

Hex file successfully imported.



VDD Target  
 Check 3.3  
 /MCLR

Read Write Verify Erase Blank Check

**Program Memory**

Enabled Hex Only Source: C:\Users\LINXINWU\Desktop\1554.hex

0000	EFA9	F03F	FFFF	FFFF	FFFF	FFFF	FFFF	FFFF
0010	FFFF	FFFF	FFFF	FFFF	FFFF	FFFF	FFFF	FFFF
0020	FFFF	FFFF	FFFF	FFFF	FFFF	FFFF	FFFF	FFFF
0030	FFFF	FFFF	FFFF	FFFF	FFFF	FFFF	FFFF	FFFF
0040	FFFF	FFFF	FFFF	FFFF	FFFF	FFFF	FFFF	FFFF
0050	FFFF	FFFF	FFFF	FFFF	FFFF	FFFF	FFFF	FFFF
0060	FFFF	FFFF	FFFF	FFFF	FFFF	FFFF	FFFF	FFFF
0070	FFFF	FFFF	FFFF	FFFF	FFFF	FFFF	FFFF	FFFF
0080	FFFF	FFFF	FFFF	FFFF	FFFF	FFFF	FFFF	FFFF
0090	FFFF	FFFF	FFFF	FFFF	FFFF	FFFF	FFFF	FFFF
00A0	FFFF	FFFF	FFFF	FFFF	FFFF	FFFF	FFFF	FFFF
00B0	FFFF	FFFF	FFFF	FFFF	FFFF	FFFF	FFFF	FFFF


**EEPROM Data**

Enabled Hex Only

00	FF	FF	FF	FF	FF	FF	FF	FF	FF	FF	FF	FF	FF	FF
10	FF	FF	FF	FF	FF	FF	FF	FF	FF	FF	FF	FF	FF	FF
20	FF	FF	FF	FF	FF	FF	FF	FF	FF	FF	FF	FF	FF	FF
30	FF	FF	FF	FF	FF	FF	FF	FF	FF	FF	FF	FF	FF	FF

Auto Import Hex + Write Device

Read Device + Export Hex File



PIC18F Configuration  
Device: PIC18F4520 Configuration: 0200 1E1F 8300 0080  
User IDs: FF FF FF FF FF FF FF FF C00F E00F 400F  
Checksum: 1122 OSCCAL: BandGap:

Programming Successful.



Read Write Verify Erase Blank Check

VDD Target  
 Check 3.3  
 /MCLR

Program Memory

Enabled Hex Only Source: C:\Users\LINXINWU\Desktop\1554.hex

0000	EFA9	F03F	FFFF	FFFF	FFFF	FFFF	FFFF	FFFF
0010	FFFF	FFFF	FFFF	FFFF	FFFF	FFFF	FFFF	FFFF
0020	FFFF	FFFF	FFFF	FFFF	FFFF	FFFF	FFFF	FFFF
0030	FFFF	FFFF	FFFF	FFFF	FFFF	FFFF	FFFF	FFFF
0040	FFFF	FFFF	FFFF	FFFF	FFFF	FFFF	FFFF	FFFF
0050	FFFF	FFFF	FFFF	FFFF	FFFF	FFFF	FFFF	FFFF
0060	FFFF	FFFF	FFFF	FFFF	FFFF	FFFF	FFFF	FFFF
0070	FFFF	FFFF	FFFF	FFFF	FFFF	FFFF	FFFF	FFFF
0080	FFFF	FFFF	FFFF	FFFF	FFFF	FFFF	FFFF	FFFF
0090	FFFF	FFFF	FFFF	FFFF	FFFF	FFFF	FFFF	FFFF
00A0	FFFF	FFFF	FFFF	FFFF	FFFF	FFFF	FFFF	FFFF
00B0	FFFF	FFFF	FFFF	FFFF	FFFF	FFFF	FFFF	FFFF

EEPROM Data

Enabled Hex Only

00	FF	FF	FF	FF	FF	FF	FF	FF	FF	FF	FF	FF	FF	FF
10	FF	FF	FF	FF	FF	FF	FF	FF	FF	FF	FF	FF	FF	FF
20	FF	FF	FF	FF	FF	FF	FF	FF	FF	FF	FF	FF	FF	FF
30	FF	FF	FF	FF	FF	FF	FF	FF	FF	FF	FF	FF	FF	FF

Auto Import Hex + Write Device

Read Device + Export Hex File

